

FED. ROAD DIST.	STATE	FA PROJ. NO.	FISCAL YEAR	SHEET NO.	TOTAL SHEETS
9	N.H.	SN-FAP 152-D(1)	1940	1	19

INDEX OF SHEETS

- SHEET NO. 1 TITLE PAGE
- 2 TYPICAL SECTION OF IMPROVEMENT
- 3,4,5 DETAIL
- 6 SUMMARY
- 7-9 PLAN
- 10-17 CROSS SECTIONS
- 18-19 STANDARDS, SHEETS 1 AND 2

STATE OF NEW HAMPSHIRE
HIGHWAY DEPARTMENT

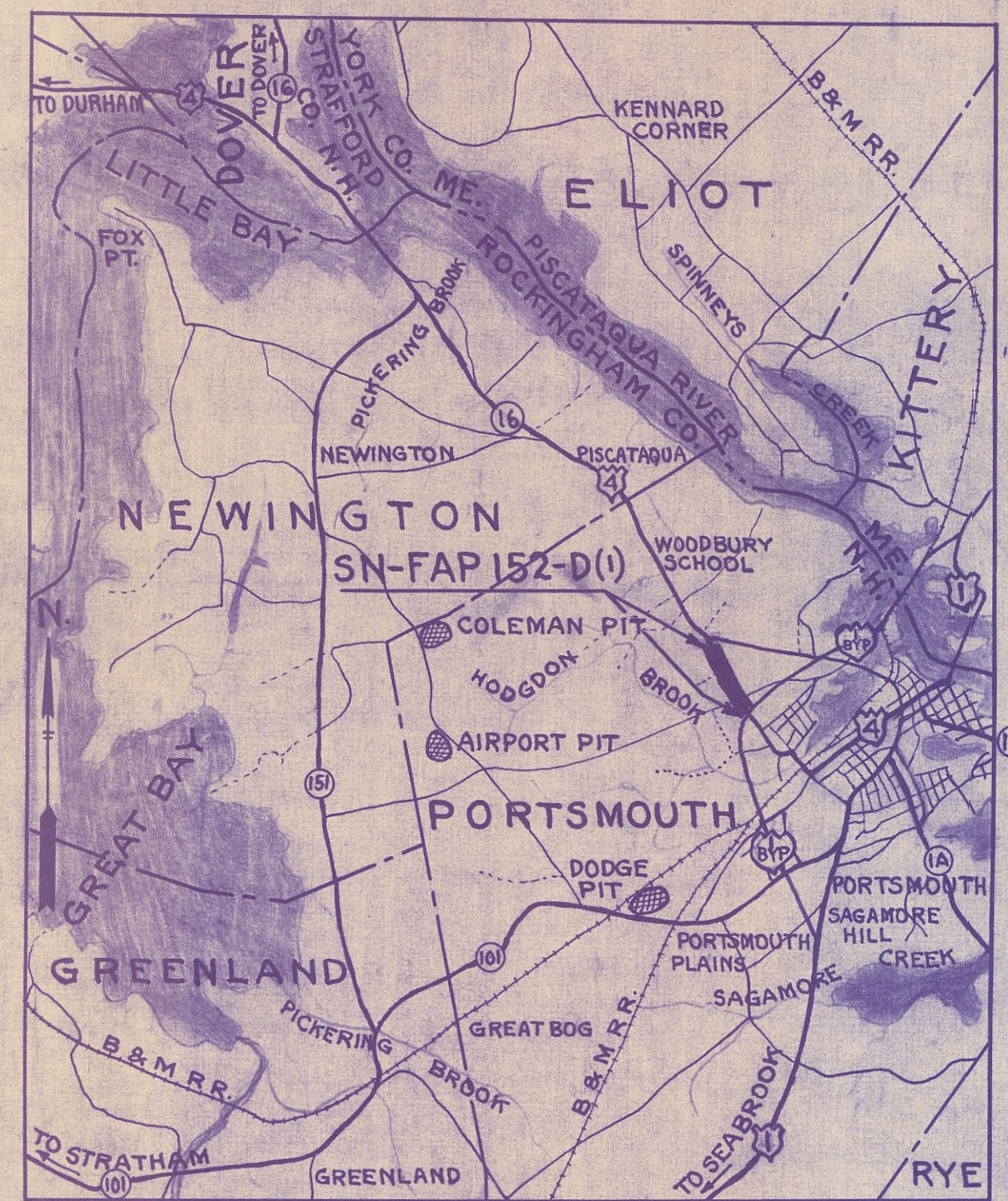
PLANS OF PROPOSED FEDERAL AID PROJECT NO. SN-FAP 152-D (I) WHITE MOUNTAIN HIGHWAY

(PLAN 1"=50'-0"
SCALES: PROFILE VERT. 1"=10'-0" HOR. 1"=50'-0"
CROSS SECTION VERT. 1"=5'-0" HOR. 1"=5'-0"

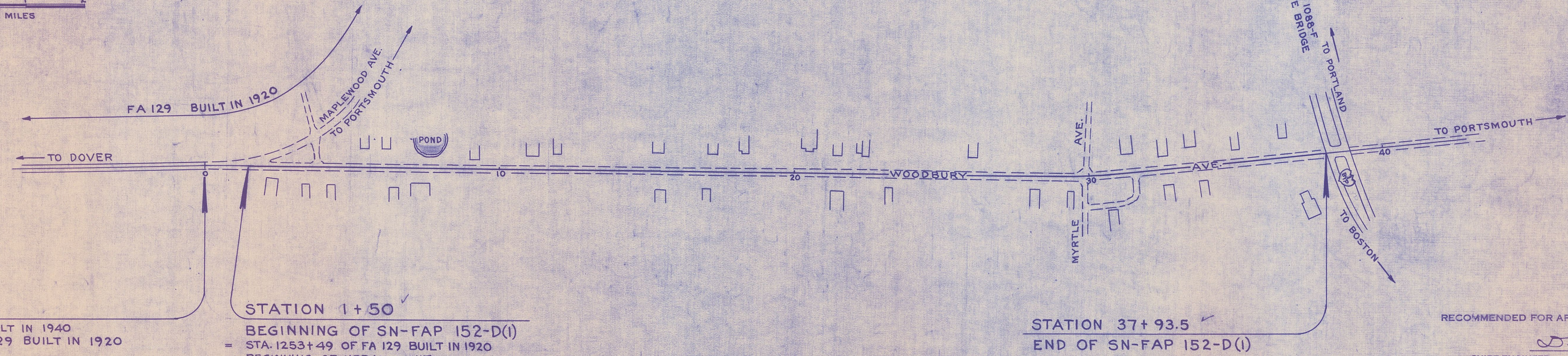
THIS PROJECT TO BE CONSTRUCTED IN ACCORDANCE WITH STANDARD SPECIFICATIONS DATED MAY 1, 1938 ON FILE WITH THE PUBLIC ROADS ADMINISTRATION AND SPECIAL PROVISIONS ATTACHED TO PROPOSAL.

NOTE:
STA. 0+00 TO 37+93.5
NEW SECTIONS TO BE TAKEN
PRIOR TO CONSTRUCTION.

No NHDOT R.O.W. Bureau records found for this project



LOCATION MAP
SCALE IN MILES



STA. 156+00
= END OF FA 129(2) BUILT IN 1940
= STA. 1254+97 OF FA 129 BUILT IN 1920

STATION 1+50
= BEGINNING OF SN-FAP 152-D(I)
= STA. 1253+49 OF FA 129 BUILT IN 1920
= BEGINNING OF URBAN LIMIT.

STATION 37+93.5
= END OF SN-FAP 152-D(I)

LAYOUT
SCALE 1"=200 FEET

CITY OF PORTSMOUTH
COUNTY OF ROCKINGHAM

CONVENTIONAL SIGNS

STATE LINE	---	ROW LINE	---
TOWN LINE	---	SURVEY LINE	---
FENCE	---	CULVERTS	---
STONE WALL	---	POWER POLES	---
UNFENCED PROPERTY	---	TELEPHONE POLES	---
TRAVELED WAY	---	GROUND ELEVATION	---
RAILROADS	---	GRADE ELEVATION	---
RETAINING WALL	---	SLOPE LINE	---
SEWER MANHOLE	---	CATCH BASIN	---
HYDRANT	---	DROP INLET	---
SINGLE FACED WALL	---	BRUSH LINE	---

RECOMMENDED FOR APPROVAL: DATE: *May 2, 1941*

D.W. Dickerson
CHIEF ENGINEER

APPROVED:
H. Bennett
HIGHWAY COMMISSIONER

RECOMMENDED FOR APPROVAL:
DISTRICT ENGINEER
PUBLIC ROADS ADMINISTRATION
FEDERAL WORKS AGENCY

APPROVED:
COMMISSIONER
PUBLIC ROADS ADMINISTRATION
FEDERAL WORKS AGENCY

DRAWN BY GOODWIN
CHECKED BY RILEY
DATE 4-9-41
DATE 4-25-41

NOTE BOOKS

BOOK NO.	PAGE NO.
2608	46-47
2988	4-5
2989	8-12

TYPE OF SURFACE REPLACED
 3643.5 FT. BITUMINOUS MACADAM
 24 FT. WIDE
 STA. 1+50 TO 37+93.5
 3643.5 FT. = 0.690 MILES

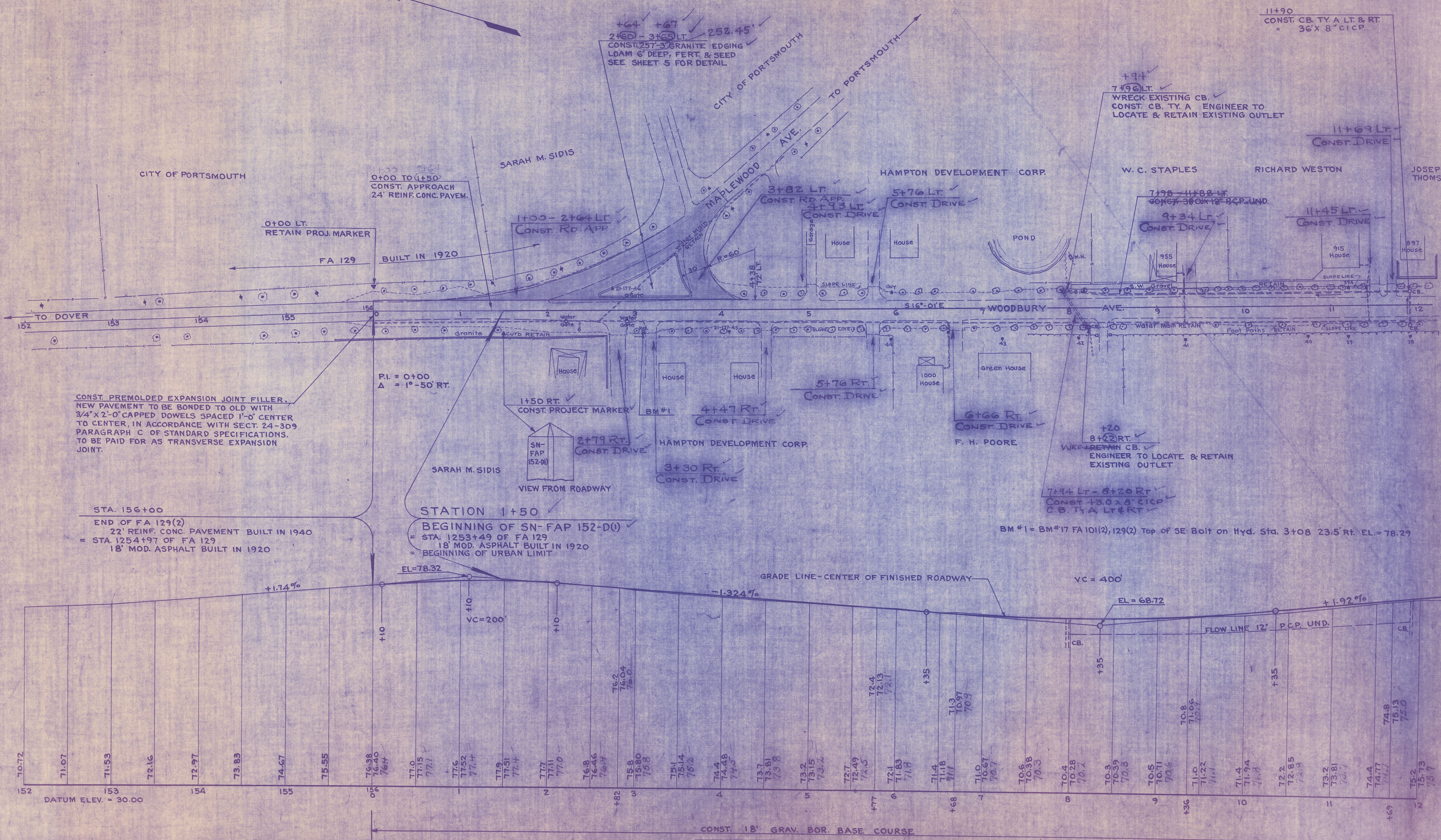
NOTE:
 ALL PUBLIC UTILITY SYSTEMS
 TO BE RETAINED

FED. ROAD DIST. NO.	STATE	FA PROJ. NO.	FISCAL YEAR	SHEET NO.	TOTAL SHEETS
9	N.H.	SN-FAP 152-D0	1941	7	19

REVISIONS AFTER PROPOSAL

DATE	STA.	TO	DESCRIPTION
3-17-41			
3-12-41			
3-18-41			
4-11-41			
4-18-41			
4-25-41			

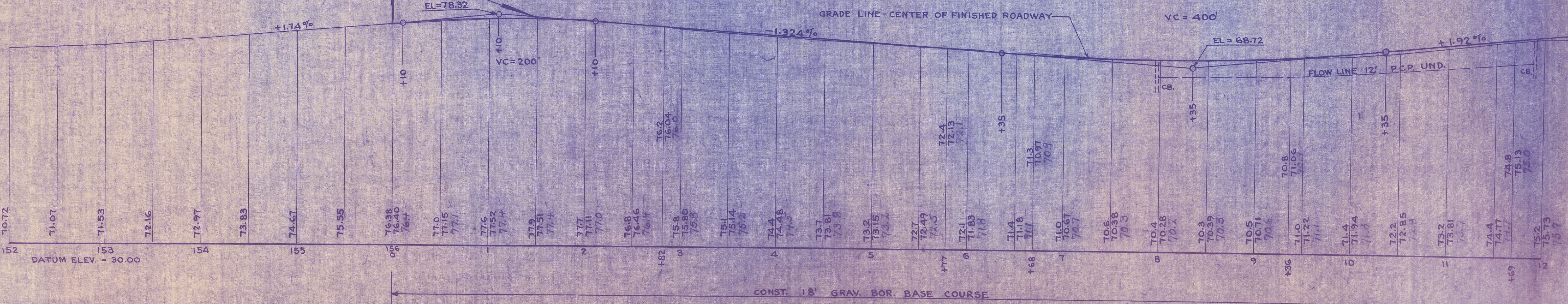
PLAN TRACED BY	GOODWIN
CHECKED BY	ALDRICH
PROFILE TRACED BY	WEBB
CHECKED BY	GOODWIN
TRACED BY	GOODWIN
CHECKED BY	WEBB



CONST. PREMOLDED EXPANSION JOINT FILLER.
 NEW PAVEMENT TO BE BONDED TO OLD WITH
 3/4" X 2'-0" CAPPED DOWELS SPACED 1'-0" CENTER
 TO CENTER, IN ACCORDANCE WITH SECT. 24-309
 PARAGRAPH C OF STANDARD SPECIFICATIONS.
 TO BE PAID FOR AS TRANSVERSE EXPANSION
 JOINT.

STA. 156+00
 END OF FA 129(2)
 22' REINF. CONC. PAVEMENT BUILT IN 1940
 = STA. 1254+97 OF FA 129
 18' MOD. ASPHALT BUILT IN 1920

STATION 1+50
 BEGINNING OF SN-FAP 152-D(1)
 = STA. 1253+49 OF FA 129
 18' MOD. ASPHALT BUILT IN 1920
 = BEGINNING OF URBAN LIMIT



BM #1 = BM #17 FA 101(2), 129(2) Top of SE Bolt on Hyd. Std. 3+08 23.5' Rt. EL. = 78.29

PROJ. NO.	SHEET NO.	TOTAL SHEETS
SN-FAP 152-D0	7	19

NOTE BOOKS

BOOK NO.	
PAGE NO.	

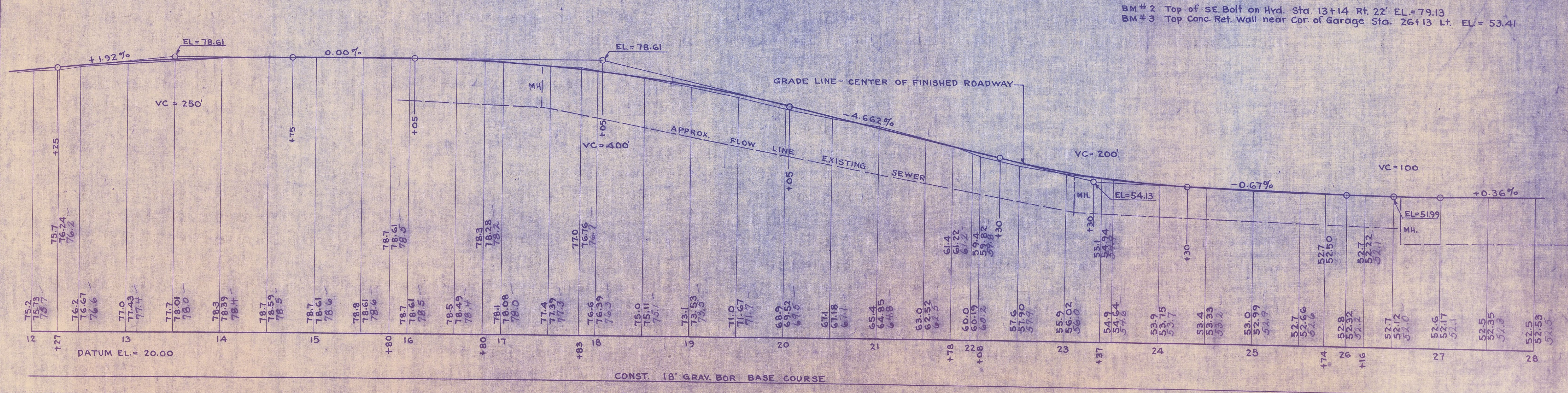
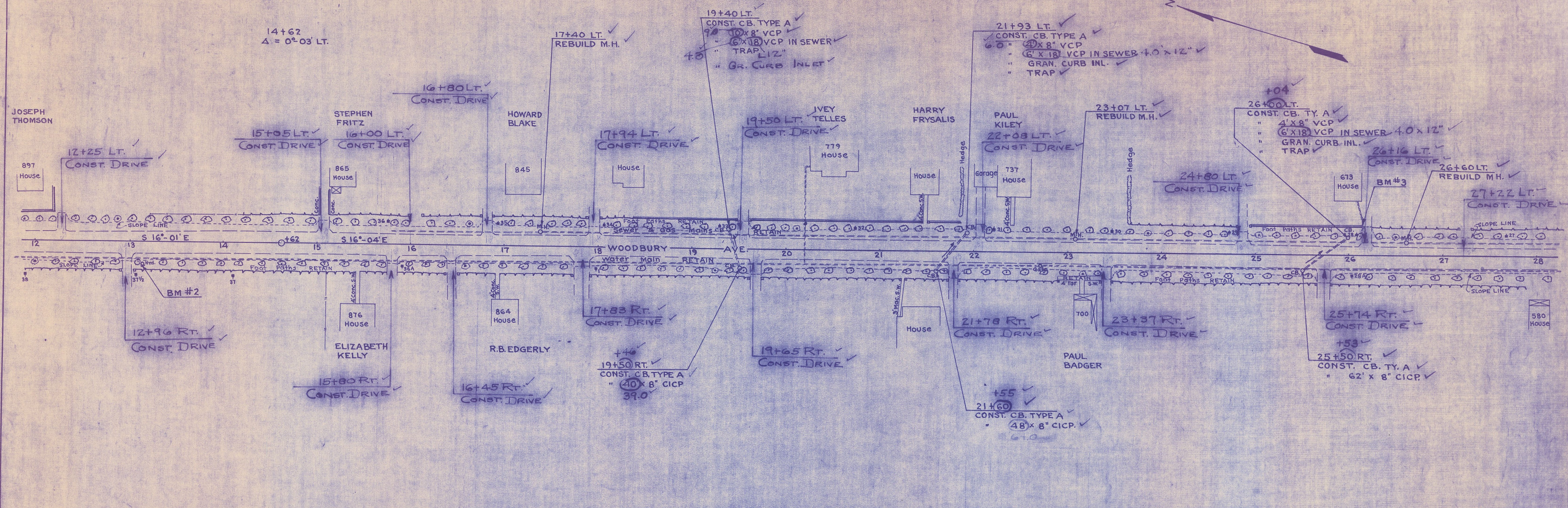
REVISIONS AFTER PROPOSAL

DATE	STA.	TO	STA.	DESCRIPTION
2-24-47	12	13	14	WOODBURY AVE. REVISIONS
2-27-47	15	16	17	WOODBURY AVE. REVISIONS

PLAN TRACED BY	GOODWIN	DATE	3-17-41
CHECKED BY	L.B. ALDRICH	DATE	4-12-41
PROFILE TRACED BY	WEBB	DATE	3-18-41
CHECKED BY	GOODWIN	DATE	4-11-41
INKED BY	GOODWIN	DATE	4-21-41
CHECKED BY	WEBB	DATE	4-25-41

FED. ROAD DIST. NO.	STATE	F.A. PROJ. NO.	FISCAL YEAR	SHEET NO.	TOTAL SHEETS
9	N. H.	SN-FAP 152-D(0)	1941	8	19

NOTE: ALL PUBLIC UTILITY SYSTEMS TO BE RETAINED



BM #2 Top of SE Bolt on Hyd. Sta. 13+14 Rt. 22' EL=79.13
 BM #3 Top Conc. Ret. Wall near Cor of Garage Sta. 26+13 Lt. EL=53.41

PROF. NO. MICROSCALE TRACING CLUTCH BOARD (ELECTRIC TYPE COPY) 1000-40

PROJ. NO.	SN-FAP 152-D(0)	SHEET NO.	8	TOTAL SHEETS	19
-----------	-----------------	-----------	---	--------------	----

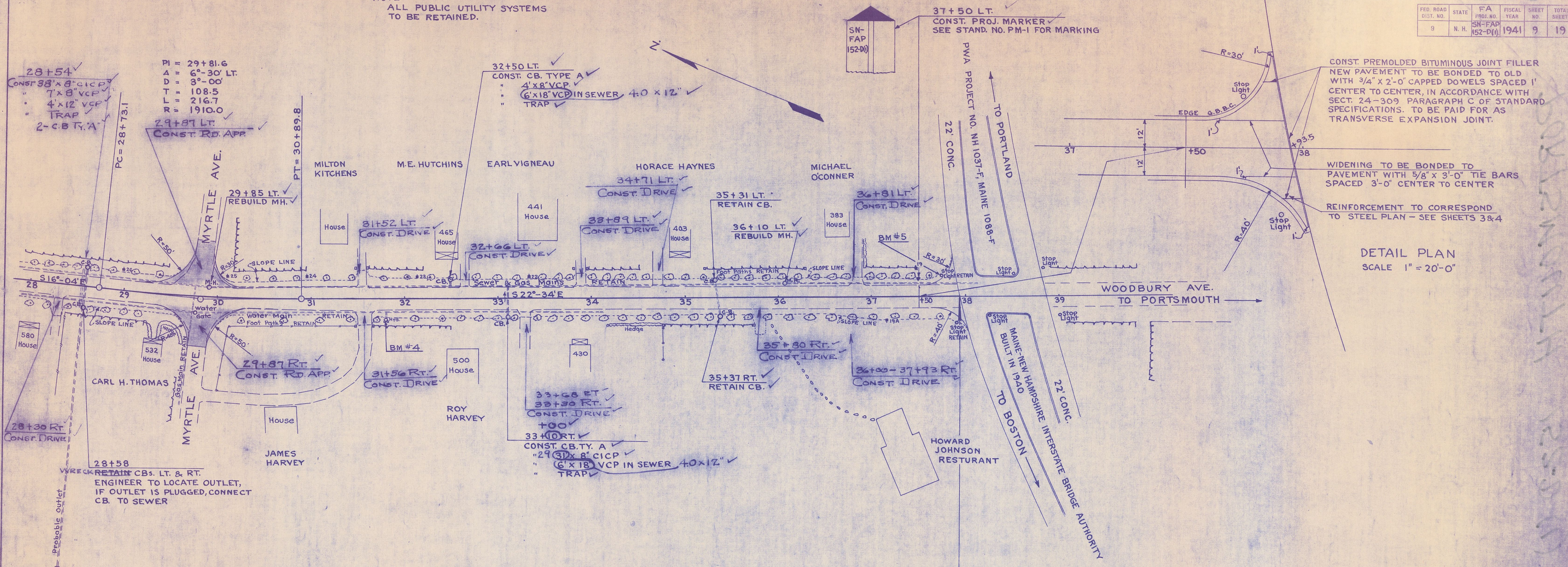
NOTE BOOKS	BOOK NO.	PAGE NO.
	2608	46-47
	2988	45
	2989	8-12

REVISIONS AFTER PROPOSAL	DATE	STA.	TO	STA.	DESCRIPTION
	2-24-42	28+00	28+42		ADD 4' V.C.P. IN SEWER
	2-27-42	28+00	28+42		ADD 4' V.C.P. IN SEWER

DATE	3-17-41	DATE	4-25-41
BY	GOODWIN	BY	WEBB
CHECKED	ALDRICH	CHECKED	WEBB
DATE	4-12-41	DATE	4-25-41
BY	GOODWIN	BY	WEBB
CHECKED	GOODWIN	CHECKED	WEBB

NOTE:
ALL PUBLIC UTILITY SYSTEMS
TO BE RETAINED.

FED. ROAD DIST. NO.	STATE	FA PROJ. NO.	FISCAL YEAR	SHEET NO.	TOTAL SHEETS
9	N. H.	SN-FAP 152-D(1)	1941	9	19



CONST. PREMOLDED BITUMINOUS JOINT FILLER NEW PAVEMENT TO BE BONDED TO OLD WITH 3/4" X 2'-0" CAPPED DOWELS SPACED 1' CENTER TO CENTER, IN ACCORDANCE WITH SECT. 24-309 PARAGRAPH C OF STANDARD SPECIFICATIONS. TO BE PAID FOR AS TRANSVERSE EXPANSION JOINT.

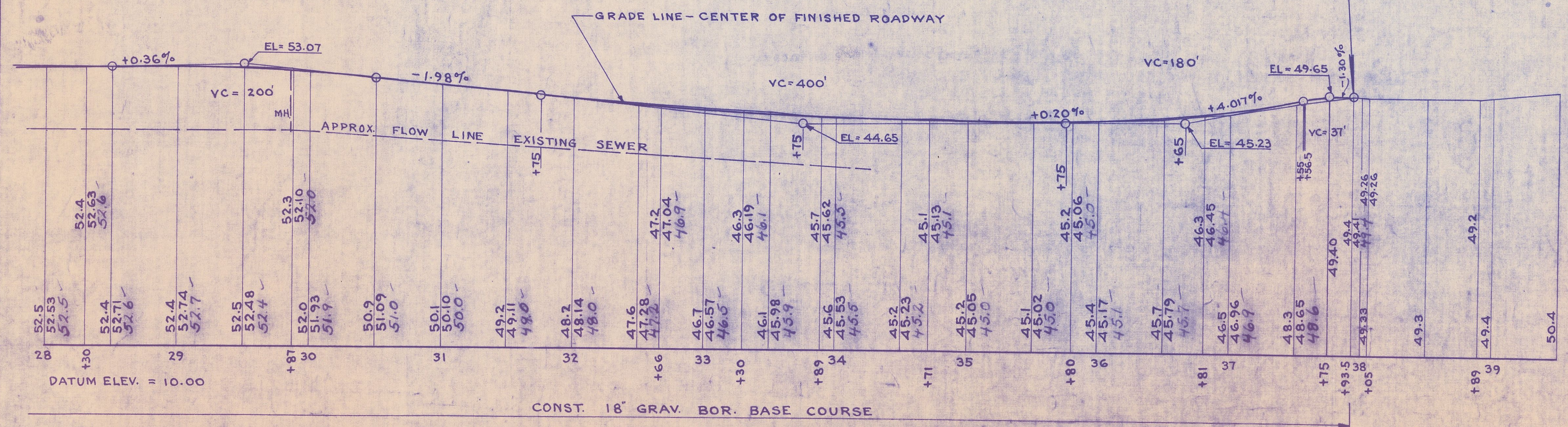
WIDENING TO BE BONDED TO PAVEMENT WITH 5/8" X 3'-0" TIE BARS SPACED 3'-0" CENTER TO CENTER

REINFORCEMENT TO CORRESPOND TO STEEL PLAN - SEE SHEETS 3&4

DETAIL PLAN
SCALE 1" = 20'-0"

STATION 37+93.5
END OF SN-FAP 152-D(1)

BM #4 Top of SE. Bolt on Hyd. Sta. 31+80 21.5' Rt. EL. = 51.01
BM #5 NW. Cor. of Conc. Base of Stop Light Sta. 37+74 21.5' Lt. EL. = 49.09



PROJ. NO.	SHEET NO.	TOTAL S.
SN-FAP 152-D(1)	9	19

P27